

Date:

Wednesday 23 July 2025 at 9.00 am

Venue:

Council Chamber, Dunedin House, Columbia Drive, Thornaby TS17 6B

Agenda

1. **Evacuation Procedure** (Pages 07 - 08)
2. **Apologies for Absence**
3. **Declarations of Interest**
4. **Minutes** (Pages 09 - 12)
5. **Recorded Crime & Disorder Report** (Pages 13 - 18)
6. **Neighbourhood Police Update**
7. **Knife Crime Action Plan** (Pages 19 - 28)
8. **Town Centre Violence Reduction Action Plan** (Pages 29 - 34)
9. **Domestic Abuse Strategy Update / DHR Recommendations**
10. **Project Harmony/Shield Update**
11. **Prevent (CT) update (nothing by exception)**
12. **Any Other Business**
13. **IQaunta** (Pages 35 - 40)
14. **SBC Performance**

Members of the Public - Rights to Attend Meeting

With the exception of any item identified above as containing exempt or confidential information under the Local Government Act 1972 Section 100A(4), members of the public are entitled to attend this meeting and/or have access to the agenda papers.

Persons wishing to obtain any further information on this meeting, including the opportunities available for any member of the public to speak at the meeting; or for details of access to the meeting for disabled people, please.

Contact: Democratic Services Support Officer - John Devine on email john.devine@stockton.gov.uk

Key – Declarable interests are :-

- Disclosable Pecuniary Interests (DPI's)
- Other Registerable Interests (ORI's)
- Non Registerable Interests (NRI's)

Members – Declaration of Interest Guidance

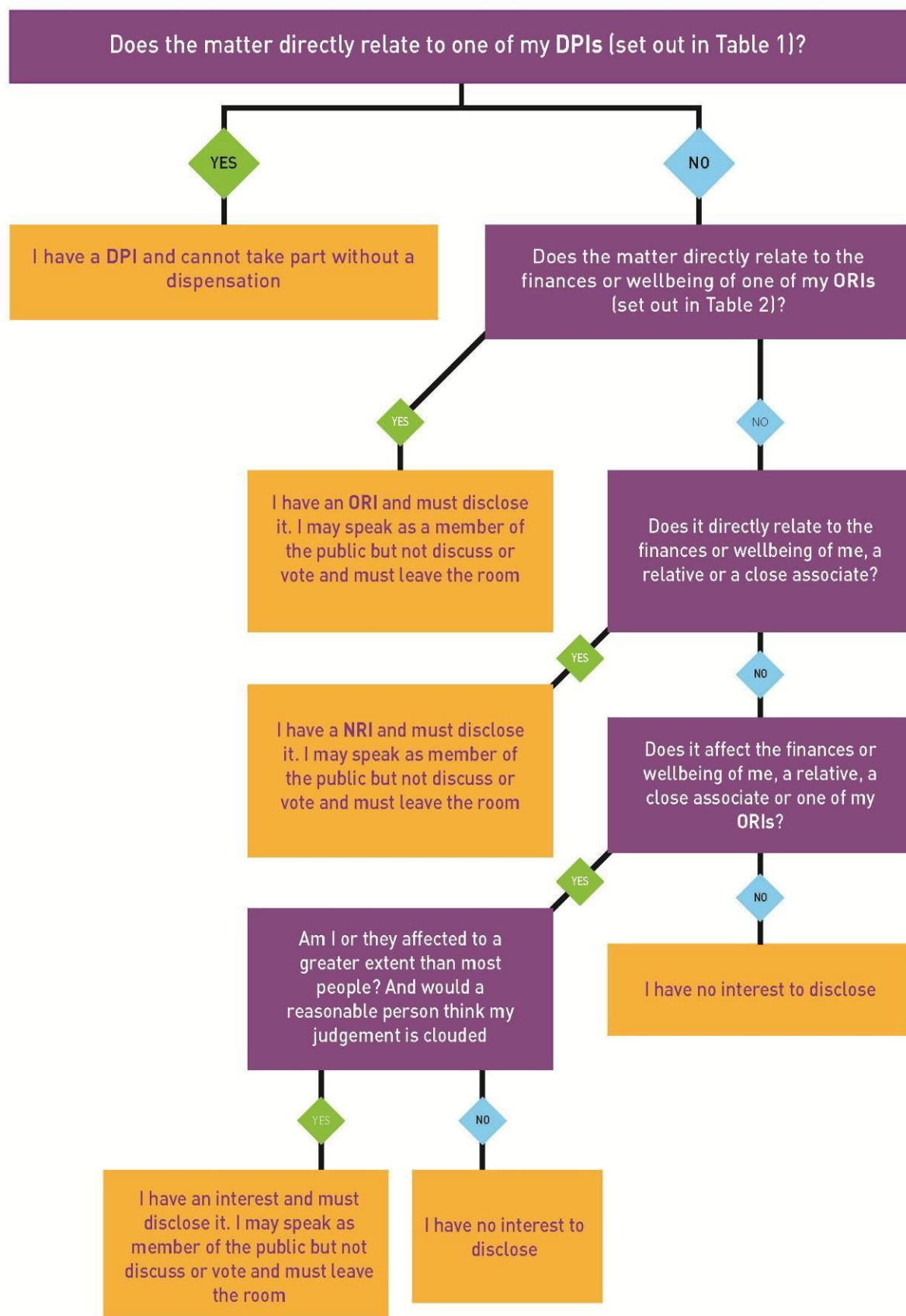


Table 1 - Disclosable Pecuniary Interests

Subject	Description
Employment, office, trade, profession or vocation	Any employment, office, trade, profession or vocation carried on for profit or gain
Sponsorship	Any payment or provision of any other financial benefit (other than from the council) made to the councillor during the previous 12-month period for expenses incurred by him/her in carrying out his/her duties as a councillor, or towards his/her election expenses. This includes any payment or financial benefit from a trade union within the meaning of the Trade Union and Labour Relations (Consolidation) Act 1992.
Contracts	Any contract made between the councillor or his/her spouse or civil partner or the person with whom the councillor is living as if they were spouses/civil partners (or a firm in which such person is a partner, or an incorporated body of which such person is a director* or a body that such person has a beneficial interest in the securities of*) and the council — (a) under which goods or services are to be provided or works are to be executed; and (b) which has not been fully discharged.
Land and property	Any beneficial interest in land which is within the area of the council. 'Land' excludes an easement, servitude, interest or right in or over land which does not give the councillor or his/her spouse or civil partner or the person with whom the councillor is living as if they were spouses/ civil partners (alone or jointly with another) a right to occupy or to receive income.
Licences	Any licence (alone or jointly with others) to occupy land in the area of the council for a month or longer.
Corporate tenancies	Any tenancy where (to the councillor's knowledge)— (a) the landlord is the council; and (b) the tenant is a body that the councillor, or his/her spouse or civil partner or the person with whom the councillor is living as if they were spouses/ civil partners is a partner of or a director* of or has a beneficial interest in the securities* of.
Securities	Any beneficial interest in securities* of a body where— (a) that body (to the councillor's knowledge) has a place of business or land in the area of the council; and (b) either— (i) the total nominal value of the securities* exceeds £25,000 or one hundredth of the total issued share capital of that body; or (ii) if the share capital of that body is of more than one class, the total nominal value of the shares of any one class in which the councillor, or his/ her spouse or civil partner or the person with whom the councillor is living as if they were spouses/civil partners have a beneficial interest exceeds one hundredth of the total issued share capital of that class.

* 'director' includes a member of the committee of management of an industrial and provident society.

* 'securities' means shares, debentures, debenture stock, loan stock, bonds, units of a collective investment scheme within the meaning of the Financial Services and Markets Act 2000 and other securities of any description, other than money deposited with a building society.

Table 2 – Other Registrable Interest

You must register as an Other Registrable Interest:

a) any unpaid directorships

b) any body of which you are a member or are in a position of general control or management and to which you are nominated or appointed by your authority

c) any body

(i) exercising functions of a public nature

(ii) directed to charitable purposes or

(iii) one of whose principal purposes includes the influence of public opinion or policy (including any political party or trade union) of which you are a member or in a position of general control or management

This page is intentionally left blank

Dunedin House Emergency Evacuation Procedure

In the event of an emergency alarm activation, everyone should immediately leave by the nearest available signed Exit route.

The main evacuation assembly point is the overflow car park, located across the road from Dunedin House.

Once there await further instructions.

- Do not re-enter the building under any circumstances without an “all clear” which should only be given by the Incident Control Officer.
- And please do not leave the area without permission.

This page is intentionally left blank

Safer Stockton Partnership

A meeting of Safer Stockton Partnership was held on Wednesday 14th May 2025.

Present: Cllr Norma Stephenson (Chair), Jon Writmore (Vice-Chair), Sharon Cooney, Dawn Tryeman, Eddie Huntington, Marc Stephenson, Adam Bateman, Gina Hurwood, Gary Knight, Andy Evans, Mandy MacKinnon, Gordon Bently, Leanne Maloney-Kelly, Ann Powell, Dave Connor, Andrea DellAquila.

Officers: John Devine

Also in attendance:

Apologies: Cllr Pauline Beall, Anna Waddington, Tracy Brittan, Majella McCarthy, Mandie Rowlands, Sarah Wilson.

SSP/1/25 Evacuation Procedure

The Evacuation Procedure was noted by members.

SSP/2/25 Declarations of Interest

There were no declarations of interest.

SSP/3/25 Minutes

The minutes of the previous meeting held on Wednesday 19th March 2025 were agreed as a true record.

AGREED.

SSP/4/25 Update On DARDRS

Members were given a brief update on the three Domestic Abuse Related Death Reviews (DARDRs) which were being reviewed by Stockton Council. One would be completed within the coming weeks, another had begun after terms of the review had been agreed, and the final review would be scheduled shortly.

A presentation on Safeguarding Adults Reviews was then given to partners from Teeswide Safeguarding Adults Board (TSAB), Officers gave a brief introduction about TSAB and how they work to protect adult's rights to live independent lives, free from abuse and neglect across the Tees area. They also work closely with various bodies such as the Local Safeguarding Children Partnership, Community Safety Partnerships, Domestic Abuse Steering Groups, Health and Wellbeing Boards, Tees Exploitation Groups and partners to deliver joint priorities and objectives.

Officers went on to discuss Safeguarding Adult Reviews (SAR) with members and how they are linked with DARDRs. They are a statutory multi-agency review where an adult with care and support needs has died or experienced serious harm due to abuse/neglect, and there is a reasonable cause for concern about how agencies worked together to safeguard the adult.

SARs are not about blame and are done to find any improvements which could be made, to prevent similar instances from occurring in the future. What partners need to know about SARs are as follows:

- Creates an open, honest and learning culture in the workforce (Including statutory and voluntary sectors across Tees area)
- Develops professional's knowledge, skills and awareness of good practice and how to overcome challenges.
- Keeps people safe – can learn from what happened to prevent similar incidents in the future.
- Can lead to positive changes for professionals and those who access services through policies, procedures, guidance and training – this can be on a local, regional and national level too.

Officers shared various links for Partners to access more information and training. It was also agreed that the links would be shared following the meeting.

Members AGREED to note the report.

SSP/5/25 DAPO Pilot

Officers gave a verbal update on the Domestic Abuse Protection Order (DAPO) Pilot which members had been informed of previously. A brief history of the pilot which started in the Greater Manchester area before being adopted in Wales. It had been launched in March for Cleveland Police and is planned to run for three years.

A number of points were highlighted to members, and they were:

- Police are required to act within 48 hours of a DAPO Application.
- There needs to be reasonable grounds for a report in order to make an application.
- Victims would have to be aged 16 or over, with perpetrators would need to be 18 or over.
- There is an option for the use of GPS tags so that restrictions can be zonal rather than limited to a home etc.
- Any breaches of the above creates opportunities to prosecute.

It was noted that there have been some challenges for Police as they are in the early stages of the pilot, but they were confident that with continued joint working any issues would be resolved.

The Partnership expressed an interest in maintaining an overview on the progress of the pilot, with regular updates to be shared with partners. Questions on capacity issues were raised by some members. However, Officers were confident that they had the capacity with the estimated number of applications at present, but work would be done to make any improvements as needed to the system.

Members also asked what training was available to partners on the new DAPO scheme, they were informed that a series of webinars were currently available to all partners. While partners were pleased that training was available some thought that more in depth training for this partnership and the Domestic Abuse Steering Group would be appropriate. Officers agreed to note the suggestion for further training.

AGREED to note the update.

SSP/6/25 Recorded Crime & Disorder Report

The Recorded Crime & Disorder Report was presented to partners; there were four parts of the report. The first was an Executive Summary which highlighted a decrease in the publicly reported offences and Police generated crime when compared to the same time last year.

Two increases were also noted, the first was related to publicly reported a 2.7% increase in anti-social behaviour (reported to Police) and a 9.82% increase in Anti-social behaviour – Stockton Borough Council Community Safety, this included noise and alcohol related issues reported by the public and officers.

The next part of the report focused on Violence, Sexual Offences and Robbery. Death or serious injury caused by illegal driving had showed a reduction of -70.6%. Violent crime was down by 6.8% while Sexual offences showed an 13.7% increase in the number of reports.

Theft, Criminal Damage and Arson were the focus of the next section of the report. Theft was reported to have reduced overall by 18%. Residential burglary showed a large reduction of -35.1% however Arson had shown a 9.5% increase compared to the previous 12 months.

Members enquired if the increase in Arson was related to repeat offenders? Officers were unable to provide an answer to members as the data wasn't available at the time of the meeting.

Officers moved onto the final section of the report dealing with Public Order, Drug Offences & Weapons. It was reported that public order offences had reduced by 17.2% while drug offences had shown an increase of 37.4% when compared to the previous 12-month period.

Partners discussed the increase in reported Anti-Social Behaviour and asked Officers to bring an in-depth report on the data to the partnership. Community Confidence was also discussed, with Partners stating that members of the community would be able to have their say in the upcoming Community Survey.

Members AGREED to note the report.

SSP/7/25 Project Harmony/ Shield Update

A brief update on the progress and work being undertaken by Officers and partners through Project Harmony & Shield was given to members.

The partners praised the joint working they had taken part in, Officers from A Way Out shared that they had engaged with 59 women in connection with the schemes. Members involved shared that feedback from residents and partners had continued to be positive.

It was noted that Project Harmony was approaching two years of operation and the reductions which had been seen were significant. Similar projects had now been implemented in Middlesbrough, Redcar and Hartlepool due to Harmonies national recognition of success.

Members agreed to note the report.

SSP/8/25 Prevent (CT) Update

A brief update on the progress and work being undertaken by Officers and partners through Project Harmony & Shield was given to members.

The partners praised the joint working they had taken part in, Officers from A Way Out shared that they had engaged with 59 women in connection with the schemes. Members involved shared that feedback from residents and partners had continued to be positive.

It was noted that Project Harmony was approaching two years of operation and the reductions which had been seen were significant. Similar projects had now been implemented in Middlesbrough, Redcar and Hartlepool due to Harmonies national recognition of success.

Members agreed to note the report.

SSP/9/25 Any Other Business

There was no other Officer business raised at the meeting.

SSP/10/25 iQuanta Report

Members were presented with a restricted report that provided an overview on crime comparisons against other similar CSPs utilising iQuanta.

This report was a restricted document due to the statistical information only made available as an intelligence tool for partnerships until released by the Home Office.

AGREED that the report be noted.

SSP/11/25 SBC Performance

Due to the connection to an ongoing Police investigation this Agenda Item was restricted.

Agreed that the update be noted.

Chair:



Crime and Disorder Report

Meeting date : 23rd July 2025

Data period 01/06/2024 – 30/06/2025

Prepared by – Stockton Borough Council Information and Intelligence Team

This report provides an overview on recorded crime, anti-social behaviour incidents and domestic abuse in the Borough of Stockton-on-Tees for the 12-month period. The bulk of the statistics utilised for this report have been obtained from Cleveland Police crime statistic databases with the figures correct at the time of data extraction. The data is extracted from a 'live' systems and therefore remains the subject of on-going operational activity, audit and scrutiny.






This report will not provide any detailed analysis unless there are any substantial changes to patterns or trends.

Executive Summary



Reporting period: June 24 – June 2025

Data Extraction Date – 02/07/2025

	General Analysis	Total	Direction	% Diff on Previous yr
	Population The rate per 1,000 population (all ages) for publicly reported crime in Stockton on Tees for current reporting period. <i>Source: Mid-Year Population Estimates, UK, 2021</i>	106.6		
	Publicly reported offences Included crimes such as drug offences, public disorder and possession on weapons	16607	↓	-9.9%
	Police generated crime Includes crimes such as drug offences, public disorder and possession of weapons,	3409	↓	-2.0%
	Total crime recorded	20016	↓	-8.1%
	Publicly reported Anti-Social Behaviour – Police as at 02/07/25	5229	↑	10.8%
	Anti-Social Behaviour – Stockton Borough Council Community Safety Including noise and alcohol related issues publicly and officer generated as at 02/07/25	5410	↓	-4.36%

Crime Overview – Year Comparison

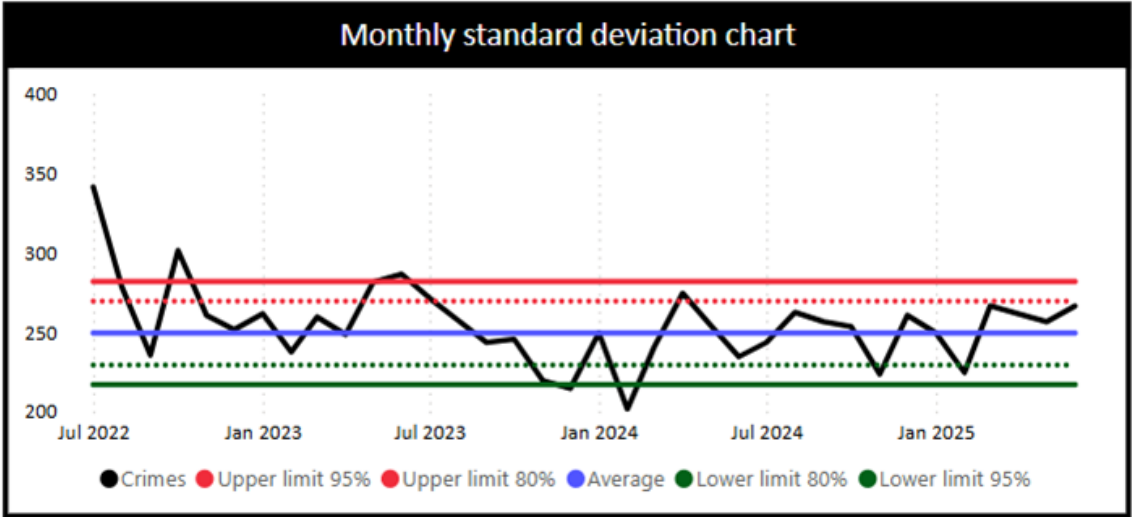
Table 1

Cleveland Police Crime Statistics for Stockton-on-Tees:
01/06/2024 – 30/06/2025
Violence, Sexual Offences and Robbery
SOURCE: Cleveland Police monthly crime statistics database

Publicly Reported Offences

- Overall VIOLENCE is down -3.2%
- SEXUAL OFFENCES overall is up by 15.7%, however RAPE alone increase by 24.7% during the reporting period.

Crime	Selected Month			Last 6 Months			Last 12 Months		
	Current	Diff	% Diff	Current	Diff	% Diff	Current	Diff	% Diff
☐ Victim Based Crime	766	52	7.3%	4356	67	1.6%	8692	-109	-1.2%
☐ Violence	674	46	7.3%	3783	-30	-0.8%	7606	-251	-3.2%
☐ Violence Without Injury	266	32	13.7%	1522	70	4.8%	3019	118	4.1%
☐ Stalking and Harassment	200	-15	-7.0%	1237	-112	-8.3%	2578	-332	-11.4%
☐ Violence With Injury	208	30	16.9%	1022	21	2.1%	2006	-19	-0.9%
☐ Death or serious injury caused by illegal driving				2	-7	-77.8%	2	-16	-88.9%
☐ Homicide		-1	-100.0%	-2	-100.0%		1	-2	-66.7%
☐ Sexual Offences	62	-5	-7.5%	445	84	23.3%	846	115	15.7%
☐ Other Sexual Offences	38	-16	-29.6%	295	54	22.4%	543	55	11.3%
☐ Rape	24	11	84.6%	150	30	25.0%	303	60	24.7%
☐ Robbery	30	11	57.9%	128	13	11.3%	240	27	12.7%
Total	766	52	7.3%	4356	67	1.6%	8692	-109	-1.2%



Crime Overview – Year Comparison

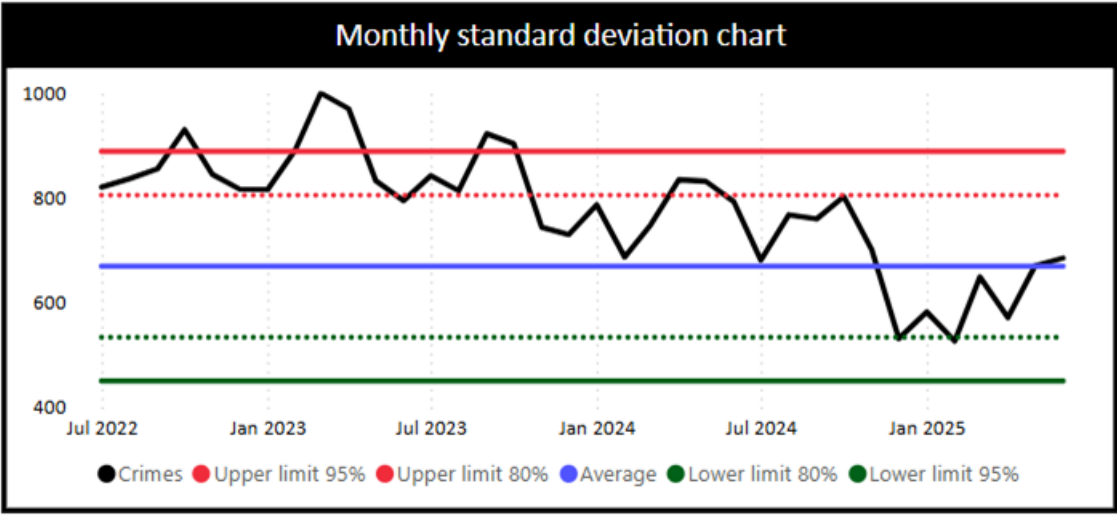
Table 2

Cleveland Police Crime Statistics for Stockton-on-Tees:
01/06/2024 – 30/06/2025
Theft, Criminal Damage and Arson
SOURCE: Cleveland Police monthly crime statistics database

Publicly reported offences

- Overall THEFT has decreased by 20.9%
- Burglary Residential saw the largest drop, down 31.2%
- CRIMINAML DAMAGE & ARSON overall declined by 9.4%; however, arson alone rose by 23.7% compared to the previous 12 months

Crime	Selected Month			Last 6 Months			Last 12 Months		
	Current	Diff	% Diff	Current	Diff	% Diff	Current	Diff	% Diff
☐ Victim Based Crime	684	-108	-13.6%	3677	-1000	-21.4%	7915	-1714	-17.8%
☐ Theft Offences	459	-102	-18.2%	2580	-819	-24.1%	5571	-1470	-20.9%
☐ Shoplifting	136	-57	-29.5%	844	-336	-28.5%	1952	-305	-13.5%
☐ All Other Theft Offences	119	-39	-24.7%	656	-166	-20.2%	1368	-375	-21.5%
☐ Vehicle Offences	94	-29	-23.6%	523	-219	-29.5%	1078	-408	-27.5%
☐ Burglary Residential	62	9	17.0%	328	-95	-22.5%	721	-327	-31.2%
☐ Burglary Business and Community	32	17	113.3%	125	4	3.3%	246	-13	-5.0%
☐ Bicycle Theft	8	-3	-27.3%	67	-8	-10.7%	133	-47	-26.1%
☐ Theft From The Person	8	0	0.0%	37	1	2.8%	73	5	7.4%
☐ Criminal Damage & Arson	225	-6	-2.6%	1097	-181	-14.2%	2344	-244	-9.4%
☐ Criminal Damage	193	-22	-10.2%	1001	-194	-16.2%	2172	-277	-11.3%
☐ Arson	32	16	100.0%	96	13	15.7%	172	33	23.7%
Total	684	-108	-13.6%	3677	-1000	-21.4%	7915	-1714	-17.8%



Crime Overview – Year Comparison

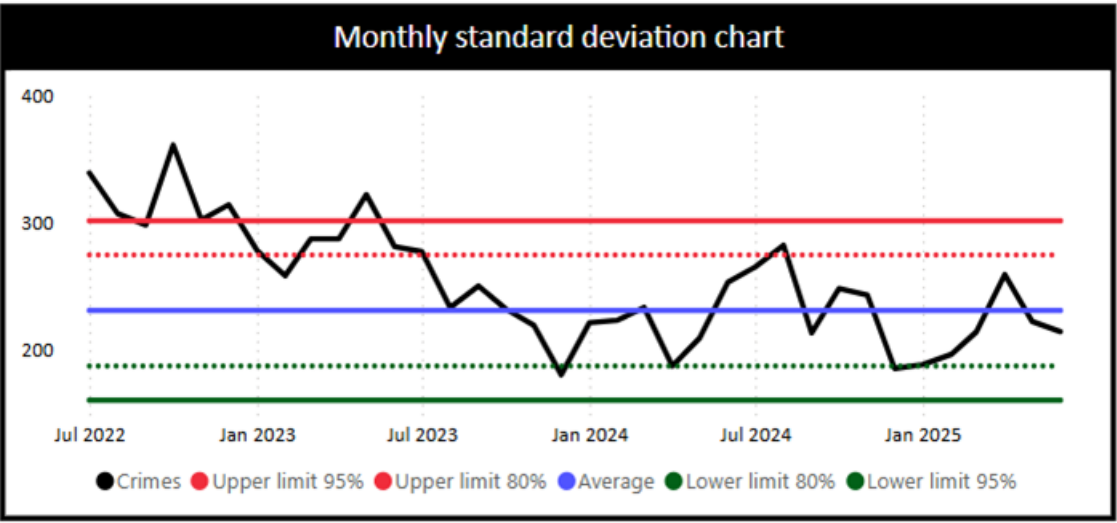
Table 3

Cleveland Police Crime Statistics for Stockton-on-Tees:
01/06/2024 – 30/06/2025
Public Order, Drug Offences and Weapons
SOURCE: Cleveland Police monthly crime statistics database

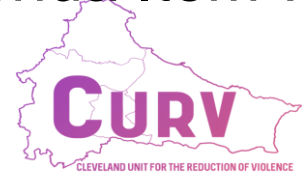
Publicly reported offences

- Drug offences have increased by 31.0% compared to the previous 12-month period
- Public Order Offences have decreased by 10.9%

Crime	Selected Month			Last 6 Months			Last 12 Months		
	Current	Diff	% Diff	Current	Diff	% Diff	Current	Diff	% Diff
⊟ Non victim based	214	-39	-15.4%	1293	-33	-2.5%	2729	12	0.4%
⊟ Public Order Offences	140	-13	-8.5%	753	-106	-12.3%	1626	-199	-10.9%
⊟ Public Order Offences	140	-13	-8.5%	753	-106	-12.3%	1626	-199	-10.9%
⊟ Drug Offences	62	-15	-19.5%	437	80	22.4%	883	209	31.0%
⊟ Drug Possession	41	2	5.1%	234	20	9.3%	484	41	9.3%
⊟ Drug Trafficking	21	-17	-44.7%	203	60	42.0%	399	168	72.7%
⊟ Weapons Possession Offences	12	-11	-47.8%	103	-7	-6.4%	220	2	0.9%
⊟ Weapons Possession Offences	12	-11	-47.8%	103	-7	-6.4%	220	2	0.9%
Total	214	-39	-15.4%	1293	-33	-2.5%	2729	12	0.4%



This page is intentionally left blank



CURV: KNIFE CRIME ACTION PLAN

INTRODUCTION

The Knife Crime Action Plan has been developed through in-depth analysis and collaboration with key stakeholders, demonstrating a collective commitment to improving safety. This plan focuses on reducing knife crime through early intervention, community engagement and sustainable support for those at risk. By collaborating with schools, communities, police and local organizations, we aim to create safer environments, offer positive alternatives to violence and provide young people with the tools and opportunities they need to succeed.

APPROACH

The Knife Crime Action Plan aims to reduce knife crime by targeting both young people and adults. For young people, the focus is on prevention through early engagement, positive alternatives to violence and support at critical moments. The plan empowers communities with youth-led campaigns, real-life stories, and safe spaces. For adults (19+), the emphasis is on long-term solutions like job training, skill development, and mentorship to create lasting opportunities. By collaborating closely with stakeholders, we will ensure a coordinated approach that aligns prevention efforts with enforcement actions. Our goal is to build stronger, safer communities where individuals have the tools and support to avoid serious violence and contribute to a Safer Cleveland.

KEY THEMES

1. **PREVENTION – ENGAGE, EDUCATE AND DIVERT**
2. **EARLY INTERVENTION – SUPPORTING AT CRITICAL CROSSROADS**
3. **COMMUNITY ACTION – REDUCING KNIFE CRIME TOGETHER**
4. **BUILDING TOMORROW – CREATING OPPORTUNITIES FOR A SAFER FUTURE**

OBJECTIVES:

- **Engage Young People:** Deliver programs to educate young people about the dangers of knife crime and offer positive alternatives.
- **Provide Mentorship:** Connect young people with mentors from non-violent industries to help guide their choices.
- **Create Safe Spaces:** Set up safe environments where young people can get support and engage in positive activities.
- **Support Youth-Led Campaigns:** Empower young people to lead anti-knife crime campaigns and raise awareness in their communities.

- **Professional Development:** Provide training and job opportunities to help young people build skills for the future.
- **Strengthen Community and Police Collaboration:** Facilitate ongoing partnership development with CURV, local authorities, police and community groups to prevent knife crime.
- **Support Adults at Risk:** Provide guidance and support for adults at risk of becoming involved in knife crime.
- **Promote Safe Reporting:** Encourage people to report concerns about knife crime through easy-to-use or anonymous channels.
- **Reduce Knife Crime:** Work with communities to reduce knife crime and its impact on safety.
- **Monitor and Improve:** Regularly assess progress and adjust the plan based on feedback and results.

PRINCIPLES:

- **Prevention Focus:** Prioritise early intervention to stop knife crime before it starts, through education and positive youth activities.
- **Youth-Led Solutions:** Empower young people to take an active role in identifying problems and creating solutions that resonate with their peers.
- **Long-Term Impact:** Implement sustainable programs that lead to lasting change in communities, not short-term fixes.
- **Collaborative Approach:** Work closely with police, schools, local authorities, businesses and community groups to align efforts and resources.
- **Data-Driven:** Make decisions based on clear evidence, ensuring that all interventions are effective and targeted where they are needed most.

MEASURING SUCCESS:

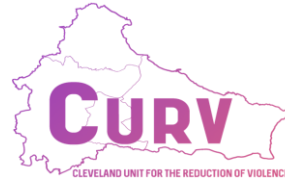
As CURV's 25-26 Action Plan sets out, the overall success measures are set out by the Home Office and include:

- NHS data on hospital admissions for assaults with a knife or sharp object, for all ages and particularly for those under 25.
- Police-reported data on knife and sharp object-enabled serious violence, across all age groups.
- Homicide statistics recorded by police, with a focus on victims under 25 and non-domestic settings (where data allows)
- Reduction in reoffending rates
- Reduction in serious violence measured using the Cambridge Harm Index
- Cost Benefit Analysis

NEXT STEPS

- **Establishing Collaborative Partnerships:** Strengthen ties with Cleveland Police, schools, local authorities and community groups to ensure smooth implementation of programmes.
- **Resource Allocation:** Identify funding and resources to support the initiatives outlined and to review collaborative commissioning.
- **Monitoring & Evaluation:** Implement a framework for monitoring and evaluating the progress of the plan to ensure accountability and transparency.
- **Data Analysis:** Ensure all key data informs delivery and commissioning.
- **Engagement & Outreach:** Continue engaging with the community through workshops, social media campaigns and outreach initiatives to ensure all stakeholders are involved and informed.

By working together across sectors, we can create a safer, more supportive Cleveland for our young people and work towards reducing knife crime across our communities.



APPENDIX 1:

CURV Knife Crime Action Plan

Area of Work	Aim	Activities
<u>PREVENTION</u> Engage, Educate and Divert	Prevent knife crime by educating and engaging young people early and offering positive alternatives to violence.	<p>Education-Based Awareness: Deliver age appropriate interactive sessions in schools, colleges and other educational settings to raise awareness of the risks and consequences of knife-related violence. This includes providing age-appropriate lessons, resources and discussions to encourage safe, informed decision-making. Given the sensitivity of addressing this topic with younger audiences, particularly in primary schools, a tiered and trauma-informed approach will be adopted. This ensures that early education focuses on fostering safety, emotional resilience, and positive choices, while being mindful of the developmental needs of the children involved.</p> <p>Knife Crime Awareness Day: Encourage educational institutions across Cleveland to nominate a day in their academic calendar to host a dedicated awareness event focused on knife crime. CURV will provide schools and colleges with resources and guidance via the CURV website to support their delivery, ensuring the event promotes awareness, positive choices and community discussion.</p> <p>Supporting Families: Strengthen early prevention by providing parents and carers with access to practical guidance, workshops and community-based peer support. These resources will help families feel more confident in recognising risks and supporting young people to make safe choices.</p>

		<p>CURV Resource Page: Develop a dedicated online hub with educational materials, guidelines and links to support schools, families, and community members in promoting knife crime prevention.</p> <p>PODCAST: Knife Crime Reality – Pilot Series Support the development of a short podcast series (5–6 episodes) co-produced with a local education provider. The series will be hosted by students and feature conversations with individuals connected to knife crime and serious violence, including lived experience and key community voices. The podcast aims to raise awareness, encourage dialogue, and support prevention messaging.</p> <p>E-LEARNING: Pilot the use of an accessible e-learning tool to support early intervention and education around knife crime and serious violence. The resource should be suitable for a range of age groups and communities. Explore similar programmes already in use (e.g. Northumbria’s Violence Prevention Ambassador Programme) and consider opportunities for co-commissioning across the three North East PCCs to support consistent messaging, collaboration and long-term sustainability.</p> <p>Positive Diversionary Activities: Offer accessible positive activities such as sports, music, drama, arts etc, to engage and divert young people away from potential violence or criminal activity.</p>
<p><u>EARLY INTERVENTION</u></p> <p>Supporting at Critical Crossroads</p>	<p>Provide immediate support to young people and adults at key moments to help them avoid involvement in knife crime.</p>	<p>Support at Key Moments: Expanding the existing navigator scheme (Custody, A&E) into schools. School Navigators will provide tailored support for young people at critical moments when they are at risk of becoming involved in violence, similar to our other navigator roles, helping to deter young people away from harm and towards safer, more positive paths.</p>

		<p>This expansion supports our long-term vision to build a consistent, trusted network of Navigators across Cleveland, embedded in key settings to ensure young people receive the right support at the right time. These roles will help bridge gaps across education, health, and criminal justice, creating a more joined-up response for those at risk.</p> <p>Alongside this, we will continue to strengthen the existing navigator schemes in Custody & A&E, developing a sustainable and coordinated system of support across all key areas. This approach will strengthen our ability to offer long-term, coordinated intervention, ensuring young people receive the support they need at critical crossroads. We will also explore targeted interventions for repeat offenders with a focus on trauma-informed, relationship-based approaches that aim to disrupt cycles of reoffending and connect individuals to more positive, long-term opportunities.</p> <p>Probation and Diversion Programmes: Strengthen referral pathways into existing diversion programmes (e.g., DIVERT) for individuals involved in weapons possession, ensuring they receive timely and effective support.</p> <p>Probation Collaboration: Enhance cooperation with probation services to provide coordinated support for young adults at risk of reoffending. This includes joint planning and ensuring a smooth transition from custody to community-based services.</p> <p>Mentorship & Guidance: Provide mentors to guide young people away from violence and towards positive choices.</p> <p>Mentorship with a Twist: Pair at-risk young people not only with lived experience mentors but also with professionals from non-</p>
--	--	--

		<p>violent industries (e.g., construction, sports, healthcare, arts, culinary, etc.). This will give them exposure to positive career paths and help build practical connections, empowering them with the tools and networks needed for a better future.</p> <p>Outreach in High-Risk Areas: Pilot support teams (pop-up workshops) in neighbourhoods with elevated levels of knife crime, engaging with young people and offering alternatives to violence. These efforts will align with SV hotspot areas, police initiatives in Clear Hold Build Areas, and function as a support resource during critical incidents (e.g., homicide, stabbings). This will ensure a coordinated approach, combining community support, prevention, and proactive law enforcement to reduce knife crime and improve safety.</p> <p>Safe Reporting Channels: Develop or signpost existing reporting channels to encourage safe, anonymous reporting of knife crime concerns. This may involve promoting initiatives like Crimestoppers or their Fearless campaign, encouraging individuals to report information securely and confidentially, ensuring concerns are addressed without fear of reprisal.</p> <p>Supporting Families: Work with and support families in all intervention efforts to prevent knife crime.</p> <p>Focused Deterrence: To develop the programme based on last year's learnings, this approach will focus on serious violence (SV) and target individuals at critical crossroads. It combines support for those involved in violence, engages the community to encourage reintegration, and clearly communicates the consequences of crime with swift enforcement. Piloted in areas based on hotspot data, focused deterrence seeks to steer individuals away from violence</p>
--	--	--

		and towards safer futures by offering access to community resources and positive alternatives
<p><u>COMMUNITY ACTION</u></p> <p>Reducing Knife Crime Together</p>	Empower the community to actively participate in reducing knife crime and support safer environments for all.	<p>Real-Life Stories: Share personal accounts from individuals affected by knife crime to help raise awareness and highlight its impact, including restorative conversations.</p> <p>Supporting Families: Promote involvement in local responses to knife crime through forums, opportunities to share lived experience and access to relevant support services. This will help ensure families feel heard, supported and connected to community efforts.</p> <p>Youth-Led Campaigns: Support young people in creating and sharing anti-knife crime messages on social media and within their communities.</p> <p>Youth-Led Problem Solving: Set up forums or task forces where young people can identify local causes of knife crime and produce their own solutions.</p> <p>Safe Spaces: Establish safe zones where individuals can access support, engage in positive activities, and spend time in a secure environment.</p> <p>Community Pledge Campaign: Pilot a campaign encouraging individuals and businesses to pledge support for knife crime awareness and to take action to create safer spaces in their communities.</p> <p>Training for Trusted Adults: Train trusted adults in communities, such as teachers, barbers, and shopkeepers, to recognize signs of knife crime risk and offer support to young people.</p> <p>Weapon Amnesty & Proactive Police Operations: Work closely with Cleveland Police's Knife Crime and Serious Violence leads to</p>

		align prevention programs with proactive efforts to reduce dangerous weapons in circulation, including zombie knives and machetes. This will include engaging communities on weapon amnesties and ensuring non-operational support efforts complement enforcement actions of Cleveland Police.
<u>BUILDING TOMORROW</u> Creating Opportunities for a Safer Future	Provide individuals with the skills and opportunities for long-term growth, while developing sustainable solutions to reduce knife crime and strengthen communities.	<p>Knife Crime Taskforce: Resume the Knife Crime Taskforce originally launched by <i>The Northern Echo</i>, with participation from North East Violence Reduction Units, Police and Crime Commissioner's, commissioned services and key delivery partners. The Taskforce will strengthen regional collaboration, support the sharing of effective practice and help align local and regional responses. It will provide a platform for joint working, youth and community engagement and the development of consistent, evidence-informed approaches and messaging around knife crime prevention.</p> <p>Sustainable Solutions: Focus on implementing approaches that build long-term resilience within communities. Where possible, support the development of self-sustaining initiatives that continue to provide opportunities and reduce knife crime beyond the life of individual projects.</p> <p>Youth-Led Change: Involve young people in shaping local responses and informing policies that affect them. Their insight will help ensure that strategies are relevant, realistic and rooted in lived experience.</p> <p>Job & Training Opportunities: Work with partners to connect young people to job training, apprenticeships and other positive pathways. This includes piloting approaches that focus on long-term skill development, mentoring and employment support.</p>

		<ul style="list-style-type: none"> • <i>Social Enterprise Hubs for Youth:</i> Explore the creation of local hubs where young people can gain business skills, access vocational training, and learn about entrepreneurship, providing positive alternatives to criminal activity. • <i>Skills-Building in High-Risk Areas:</i> Pilot targeted workshops and training programmes in high-demand sectors (e.g. construction, hospitality, technology) in areas most affected by knife crime. These pilots aim to increase access to future job opportunities and reduce vulnerability. • <i>Community-Based Youth Jobs:</i> Collaborate with local authorities and businesses to assess small-scale job schemes for at-risk young people. These could include local event support, park maintenance, or peer mentoring—providing paid experience and a stronger sense of community connection. <p>Support for 19+ Young Adults: Strengthen existing interventions by building closer links with probation services and community partners. Explore the potential to expand successful programmes—such as MFC Foundation’s 19-24+ Kicks—across other parts of Cleveland, where appropriate. These efforts aim to provide consistent mentorship and positive pathways for young adults at risk of violence or reoffending.</p> <p>Ongoing Feedback & Improvement: Monitor progress and gather feedback from young people, community members and delivery partners to adapt and improve initiatives as they develop, ensuring responses remain informed, realistic and responsive to local need.</p>
--	--	--



CURV: TOWN CENTRE VIOLENCE REDUCTION PLAN

INTRODUCTION

In line with the new Police and Crime Plan, the TCVR plan takes its origins from the NTE Action Plan delivered previously and will look to deliver improved safety in the defined areas where NTE and DTE merge. This expansion recognises the overlap between day and night time economy and the transferability of safety measures. It reflects a collective approach, working in collaboration with town centre leaders from local authority and the Police force, that seeks to create a safe and thriving town centre for visitors to enjoy and businesses to succeed.

Objectives:

- Deliver Cleveland wide initiatives that seek to reduce public space serious violence in defined town centres.
- Work collaboratively with partners and support local initiatives where possible.
- Widen the number of locations where people can reach out for help, to include retail spaces and transport hubs.

Principles:

- **Evidenced Based Approach.** In reflection of the expansion of the plan, CURV will draw on surveys outlining the experiences of businesses and other town centre stakeholders to ensure delivery is reflective of need. If there is a need, CURV will update the NTE Problem Profile to expand into DTE.
- **Partnership Working.** The Action Plan will seek opportunities to implement whole system ways of working, promoting joint working and problem-solving between all partner agencies.
- **Sustainable rather than temporary.** As with the NTE Action Plan, the Town Centre Violence Reduction Plan will look to introduce interventions which are low cost with embedded support materials to ensure the long-term sustainability of successful interventions.

Measuring success:

As CURV's 25-26 Action Plan sets out, the overall success measures are set out by the Home Office. This plan will also support the objectives of the Safer Streets Mission, looking to increase public space safety, halve violence against women and halve knife crime. Success measures include:

- NHS data on Hospital admissions for assaults with a knife or sharp object (for all ages, and especially those under 25-year-olds);
- Knife and sharp enabled serious violence recorded by the police for all ages, based on police recorded crime data.
- Homicides recorded by the police but especially among those victims aged under 25 and in non-domestic settings (where the data allows).

This Action Plan will also measure success through more plan-specific indicators such as:

- Contributing to an increased perception of safety (town centre surveys).
- Contributing to a reduction in offences within the defined areas (police figures).
- Contributing to a wider objective of increasing footfall into town centres.

CURV will also look to carry out an evaluation of all process, including those introduced as part of the NTE Action Plan which continue to contribute to town centre safety.

CURV Town Centre Safety Action Plan:

The concept of the Town Centre Violence Reduction Plan is to work collaboratively with partners and key stakeholders to deliver initiatives that can be applied across Cleveland's many town centres. As outlined in Appendix 1, a number of initiatives will be delivered across the next 12 months to increase safety in town centres. This focuses on the key areas of Child Sexual Exploitation, Bleed Control, Safe Spaces and Day and Night Time Economies. This supports the Home Office requirements for Violence Reduction Units to prepare for a broader focus of Violence Against Women and Girls, Anti-Social Behaviour and Child Sexual Exploitation.

Next Steps

The next steps for this action plan will be to cost and deliver these initiatives across the next 12 months.



NOT PROTECTIVELY MARKED



CURV: TOWN CENTRE VIOLENCE REDUCTION PLAN

APPENDIX 1:

CURV Town Centre Safety Action Plan

Area of Work	Aim	Activities
Child Sexual Exploitation (CSE)	<p>Aligning with Operation Makesafe, CURV will work with partners to raise awareness of CSE in the business community, centred around town centres.</p> <p>Key town centre stakeholders such as shops, transport workers, security staff and taxi companies will be empowered to recognise signs of CSE and to report to police.</p> <p>Enhance public safety and confidence and protect vulnerable young people from exploitation.</p> <p>This will be linked to the work being delivered across the area through the Harm Outside the Home priorities.</p>	<ul style="list-style-type: none"> • Enhanced Training. CURV will expand its work on providing training to hotel and licensed premises and engage with the business community to ensure a whole system approach to identifying CSE in town centres. This could be addressed through the community guardians scheme. • Test Purchasing Operations. Ensure that those who have been trained do respond adequately to the signs of CSE. Offer further training to those who need additional support. • Online support. Provide a range of resources on the CURV website to ensure signposting to the information businesses need to enforce CSE policies. • Communications. Raise awareness to a wider audience of the signs of CSE to spot through social media. Highlight businesses or organisations who successfully report incidents; this will work to improve public confidence and perceptions in the town centre. • QR code development. Linking to online support, look to roll out QR codes around town centres that signpost to the CURV website. This will work to promote bystander intervention, across the priorities within this plan and wider.
Bleed Control	<p>Increase the availability and awareness of bleed control cabinets and kits in town centres, including police stations.</p>	<ul style="list-style-type: none"> • Bleed cabinets. CURV will continue to expand on the roll out of Bleed cabinets and will coordinate training to those working in the retail space.

	<p>Work with town centre stakeholders to deliver training in the use of bleed kits to ensure a rapid and effective response to a catastrophic bleed.</p> <p>Increase public knowledge around the presence of bleed cabinets and how they can be used, emphasising that this is not solely for knife crime.</p>	<ul style="list-style-type: none"> • Bleed Kits. Look to provide bleed kits for security teams working within town centres who can provide an immediate response to a catastrophic bleed. • CAD Systems. CURV will work with partners to ensure the assets are registered on a CAD system and will ensure the roll out synchronises with efforts associated with Martyn's law. • Awareness Campaign. Work with partners across Cleveland to promote a joined up awareness campaign, ensuring this does not impact the perception of the town centre. • Knife Bins. Work with local authorities and Cleveland Police to increase the effectiveness of knife bins currently in place and work with town centres to increase the number in place.
Safe Spaces	<p>Widen the number of locations where people can reach out for help, to include retail spaces and transport hubs.</p> <p>Effective intervention for vulnerable members of the public.</p>	<ul style="list-style-type: none"> • Enhanced Training. CURV will explore what is currently offered in town centre spaces and look at other initiatives across the country noted as good practice. This will be achieved by working with stakeholders to deliver a minimum standard of vulnerability support. • Awareness Campaign. Work with partners across Cleveland to promote a joined up awareness campaign, ensuring that members of the public are aware of this resource. • Online Support. Provide a range of resources on the CURV website to ensure signposting to information to support this initiative, particularly for new members of staff.
Night Time Economy	<p>The final phase of the NTE action plan is focused on Safer Transport; delivery will be informed by the Transport Survey.</p>	<ul style="list-style-type: none"> • Safer Transport. CURV will work with partners, including the Tees Valley Combined Authority, to provide a number of initiatives that work to increase safety on buses, trains and in taxis. This could include piloting of 'pink' taxis focused on providing female taxi drivers as an option when booking, a standards of behaviour campaign for using public transport and safer car parking. UPDATE: ACTIONS RAISED FROM THE TRANSPORT SURVEY REPORT

		<ol style="list-style-type: none"> 1. Raising awareness of how to report incidents across all three forms of transport and how they will handle the complaint. 2. Discuss the use of alcohol on buses and trains. 3. Awareness around how to effectively use the BTP text service. 4. Awareness of how transport staff can react to passengers causing issues and what action they can take. 5. Standards of behaviour campaign addressing the behaviour making people feel unsafe as outlined in this survey. 6. Awareness of level of CCTV coverage. 7. Exploration around use of body worn cameras. 8. Greater security- use of BTP specials. 9. Roll out of Ask for Angela/Ask for Angel Street. 10. Explore levels of female drivers. 11. Aggressive manner of driving of taxi drivers. 12. Complaints handling by taxi companies. 13. CCTV pilot. 14. Awareness around licensing of taxi drivers- safer taxi scheme promoting those licensed by a Cleveland authority. 15. Language barriers and knowledge tests. <ul style="list-style-type: none"> • Accreditation. CURV will build on its extensive work around supporting the NTE but provide more targeted support. We will look to work with local authorities on implementing initiatives such as Business Improvement Districts and Purple Flag Accreditation. • Drug Boxes. Explore the use of drug boxes within licensed premises as part of a drug testing scheme. • Radios. Ensure this resource remain in place with licensed premises as we have seen reduction in serious violence and increased partnership working through their presence.
--	--	--

		<ul style="list-style-type: none"> • Online Support. Provide a range of resources on the CURV website to ensure signposting to the information NTE stakeholders need.
Day Time Economy	Support business networks in ensuring communication between premises and increased confidence in reporting incidents to police.	<ul style="list-style-type: none"> • Shopwatch. Similarly to CURV's previous work with Pubwatch, support the Shopwatch networks across the area to ensure that businesses can communicate between each other, and with CCTV control rooms. • Business Crime Reduction Partnerships. Explore the interest of implementing BCRP's in areas with strong business networks.

By virtue of paragraph(s) 7 of Part 1 of Schedule 12A
of the Local Government Act 1972.

Document is Restricted

This page is intentionally left blank